



Three Phase Open Enclosure

NEMA

MOTOR MODEL:	GR3-CI-OP-365T-4-BR-D-75
FACTORY TYPE:	-

NEMA Cast Iron, ODP

ELECTRICAL DATA		
	60 Hz	50 Hz
Horsepower	75.0	-
Speed, RPM	1775	1465
Voltage	230/460	190/380
# Phase	3	
Full Load Amps	170.8/85.4	-
Power Factor	0.87	-
Nominal Efficiency	95.0	-
Service Factor	1.15	1.0
KVA Code	F	F
FL Amps. @ 208 V	188.9	-
LRC @ 60Hz HV	-	-
Start Capacitor	-	
Start Capacitor V	-	
Run Capacitor	-	
Run Capacitor V	-	
Number of Leads	12	
Connection	4D/2D	
Coil Resistance	-	
Date Code	-	
Load	Efficiency %	P.F.
50%	94.75	0.8225
75%	94.8	0.879
100%	95.0	0.87
FULL LOAD TEMPERATURE RISE		
FL Temp Rise °C	70.0	-
3D Image Link		
GR3-CI-OP-365T-4-BR-D-75		

GENERAL DATA		
Frame Size	365T	
Frame Enclosure	ODP	
Mounting	Rigid	
Insulation Class	F	
Duty	Cont. / S1	
NEMA Design	-	
Frame Material	Cast Iron	
Ingress Protection	23	
Tropicalization	true	
Cable Entry	-	
Feet Removable	-	
Double Drilled	-	
Paint Color	Graphite Gray	
Paint RAL	7024	
Weight lb	959.84	
MECHANICAL DATA		
DE Bearing	6313C3	
NDE Bearing	6312C3	
dB No-Load	-	
Rotor Wk ² , Lb-Ft ²	-	
Comp Ring (wavy washer)	NDE	
TORQUE VALUES	Torque lb-ft	% FLT
Locked Rotor Torque	-	-
Pull-Up Torque	-	-
Breakdown Torque	-	-
Full Load Torque	-	-
SITE CONDITIONS		
Ambient Temp °C	40	
Altitude Above Sea Level m	1000	

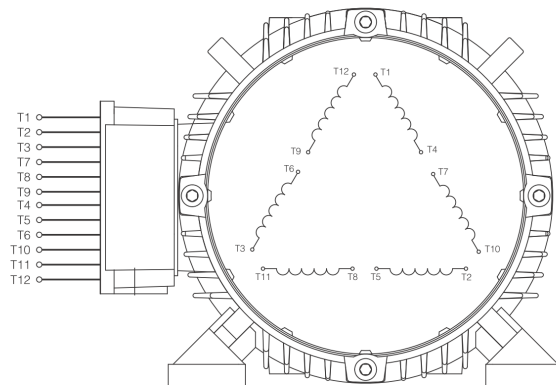
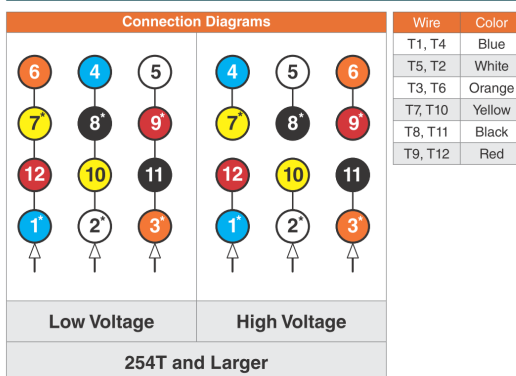
*This report valid for above Date Code and newer models, please contact Techtop for more info.

MOTOR MODEL:	GR3-CI-OP-365T-4-BR-D-75
FACTORY TYPE:	-

NEMA

NEMA Cast Iron, ODP

3 Phase NEMA ΔΔ/Δ 12 Lead 230/460V



When motor is in F1 position, leads shown with * exit the casing above the center line of the motor, the remaining leads exit below the center line. This information can be used to identify missing or mislabelled leads.

MOTOR MODEL:	GR3-CI-OP-365T-4-BR-D-75
FACTORY TYPE:	-

NEMA

NEMA Cast Iron, ODP

